

MONITORING REPORT

Outcome 6

October 22, 2020

OUTCOME 6

OUR STUDENTS WILL BE CRITICAL THINKERS WHO CONTRIBUTE TO AND COLLABORATE WITH OUR LOCAL, GLOBAL, AND NATURAL WORLD.

Outcome 6 Indicators

Our Students Will:

1. Participate on teams and know the power of teamwork.
2. Demonstrate the ability to engage in inclusive problem solving.
3. Advocate for and contribute to local, regional or global improvement by utilizing natural resources in an efficient, sustainable way.
4. Use digital tools to constructively learn from and connect with people and communities around the world.
5. Gather, interpret and present information in culturally responsive ways.

OUTCOME 6 ANCHOR METRIC

Metric #1: Energy Use

Metric #2: Copy Paper Use Count

Goals:

- Energy use and waste will be reduced in our schools and district.
 - Establish baseline for energy use and reduce consumption in district office and schools.
 - Establish baseline for printing and copying use and reduce consumption in district office and schools.
-

District Improvement Action Plan

- A. Convert incandescent lights to LED in schools and support buildings. **6.3**
- B. Install print management software across the district, monitor usage and inform staff. **6.3**
- C. Reassess recycling procedures to align with county recycling standards. Train custodians, staff, and students on best practices. **6.3**
- D. Initiate student participation in District-level planning and analysis around sustainability. **6.1/6.2**
- E. Reduce food waste in breakfast and lunch programs and increase repurposing leftover items for food banks. **6.3**
- F. Expand Climate Science Education Standards professional learning for teachers to help youth understand climate science and promote a thriving and sustainable environment. **6.1/6.3**
- G. Provide opportunities for students to expand environmental/outdoor learning and to design products that positively impact the environment. **6.1/6.2/6.3**
- H. Increase reliance on renewable energy. **6.3**
- I. Continue and expand staff training around the intentional use of technology to increase student collaboration and problem solving. **6.1/6.2/6.4**

Work In Progress

Outdoor & Environmental Ed.

- Scientists in the Classroom - Piloted 2019-20 through Billy Frank Junior Wildlife Refuge in grade 2 at RES & GES. Continuing this year.
- CISPUS Classroom kit partnership with mountaineer - stronger alignment of standards
- Sound Sound Green Partnership for 5th grade, CSI, and a handful of 4th grade
 - Trying to grow the program
 - Water quality & how it impacts salmon habitat and health
 - Green Congress - Present data in March
- COVID-specific work & opportunities:
 - [Ms. K helps with science!](#)
 - Partnering with community organizations to provide virtual field trips
 - Bulb planting on McLane Nature Trail

Work In Progress

Climate Science Education

- Avanti Natural Resources & Interdisciplinary Cohort Course
 - Quasar Surprise
- [Pacific Education Institute Partnership](#) - FieldSTEM
- Fall Tree Planting opportunity
 - Nisqually Land Trust
 - Nisqually River Education Project
- Climate Science Education Initiative - Ms. K has been very involved with Clime Time regarding assessment & a Canvas Course

Work in Progress

LED Light Conversion ES

BUILDING	bldg. sq. ft.	# of fixtures	% cnvrtd LED	LED to date
CES	48,035	610	100%	610
CES MINI	16,783	180	100%	180
GES	56,018	730	100%	730
HES	65,298	650	35%	220
HES MINI	16,783	180	100%	180
LES	50,385	650	100%	650
LPB	48,508	620	80%	520
MES	31,970	400	10%	40
MCK	50,685	650	35%	220
MCL	47,641	610	100%	610
MCL MINI	16,783	180	100%	180
PES	47,686	610	20%	120
PES MINI	16,783	180	100%	180
RES	48,035	610	100%	610
RES MINI	16,783	180	100%	180
BHES	25,832	310	85%	260

LED Light Conversion Other

BUILDING	bldg. sq. ft.	# of fixtures	% cnvrtd LED	LED to date
ORLA	68,731	900	100%	900
JMS	969,040	1,240	100%	1,240
MMS	70,036	875	40%	350
RMS	75,932	950	30%	285
WMS	97,208	1,250	70%	875
AHS	23,951	230	5%	12
CHS	240,610	3,140	35%	1,100
OHS	263,330	3,450	30%	1,100
SSC	16,726	180	50%	90
TRANS	18,900	210	75%	160
K111	51,400	615	50%	30
Today	16,736	20,390	63%	9,332
9/19-9/20	1,627,736	20,390	16%	3,305

Work in Progress

Electric Bus Grant

The Olympia School District applied for and won a Washington State Department of Ecology grant for the purchase of three electric school buses and the charging infrastructure.

These buses are currently in Everett going through inspection and should be available to us by the end of December.



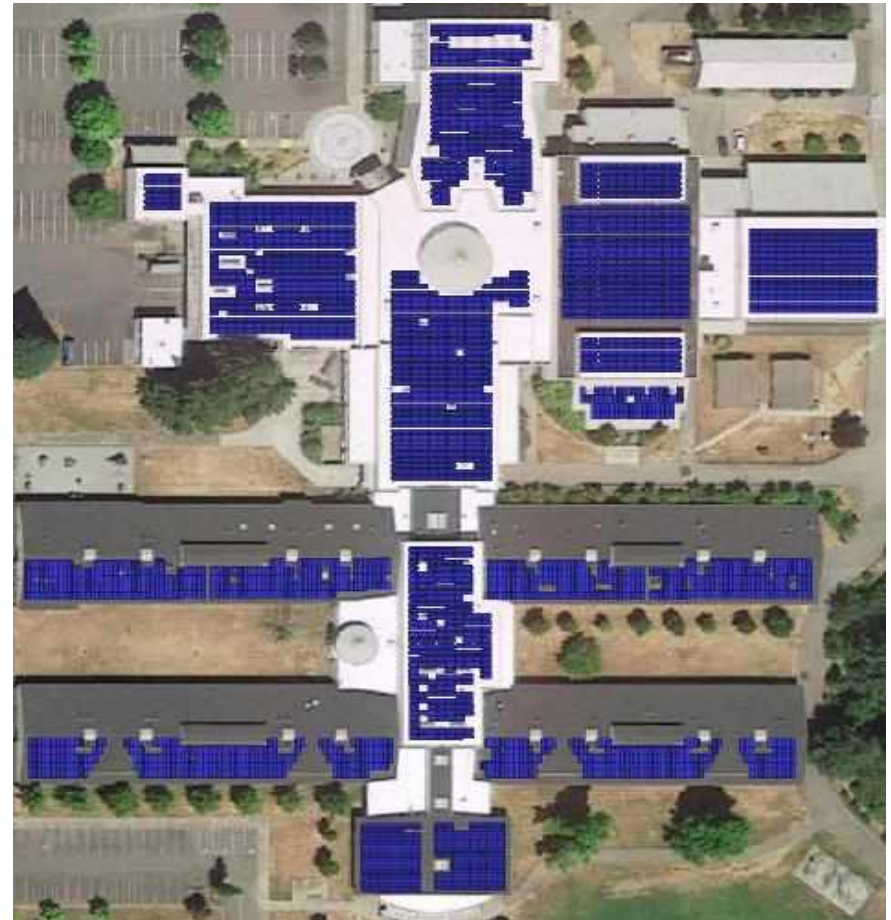
Work in Progress

Solar Panel Grant

The Olympia School District applied for and won a Puget Sound Energy Community Solar Grant. This grant will cover the cost of installing solar panels on the roof of Olympia High School.

More details to follow including the ability for students to gauge the effectiveness of these panels.

Olympia High School



Work in Progress

OHS - Climate Action Club

Olympia High School students involved in the Climate Action Club worked through our Service Support Center to provide funding for “No Idle Zone” signs. We’re placing signs throughout OHS parking areas as directed by the students.



Work in Progress

Intentional Use of Technology

- The pandemic accelerated our plans for the implementation of instructional technology.
 - Spring, summer and fall PD sessions for staff, well over 400 sessions
 - Push for asynchronous learning opportunities
 - Sessions included:
 - Schoology
 - Zoom
 - Screencastify
 - Kami
 - EdPuzzle
 - Flipgrid
 - Remind
 - Nearpod
 - YouTube (Captioning)
 - School Messenger Webpages

Print Management Software

- Papercut Print Management Software
 - Came online late last school year
 - 23 card readers on copiers/printers across the district
 - [2019-20 Report](#)
 - [2020 Report](#)

THANK YOU!